

NR BUDYNKU: 5

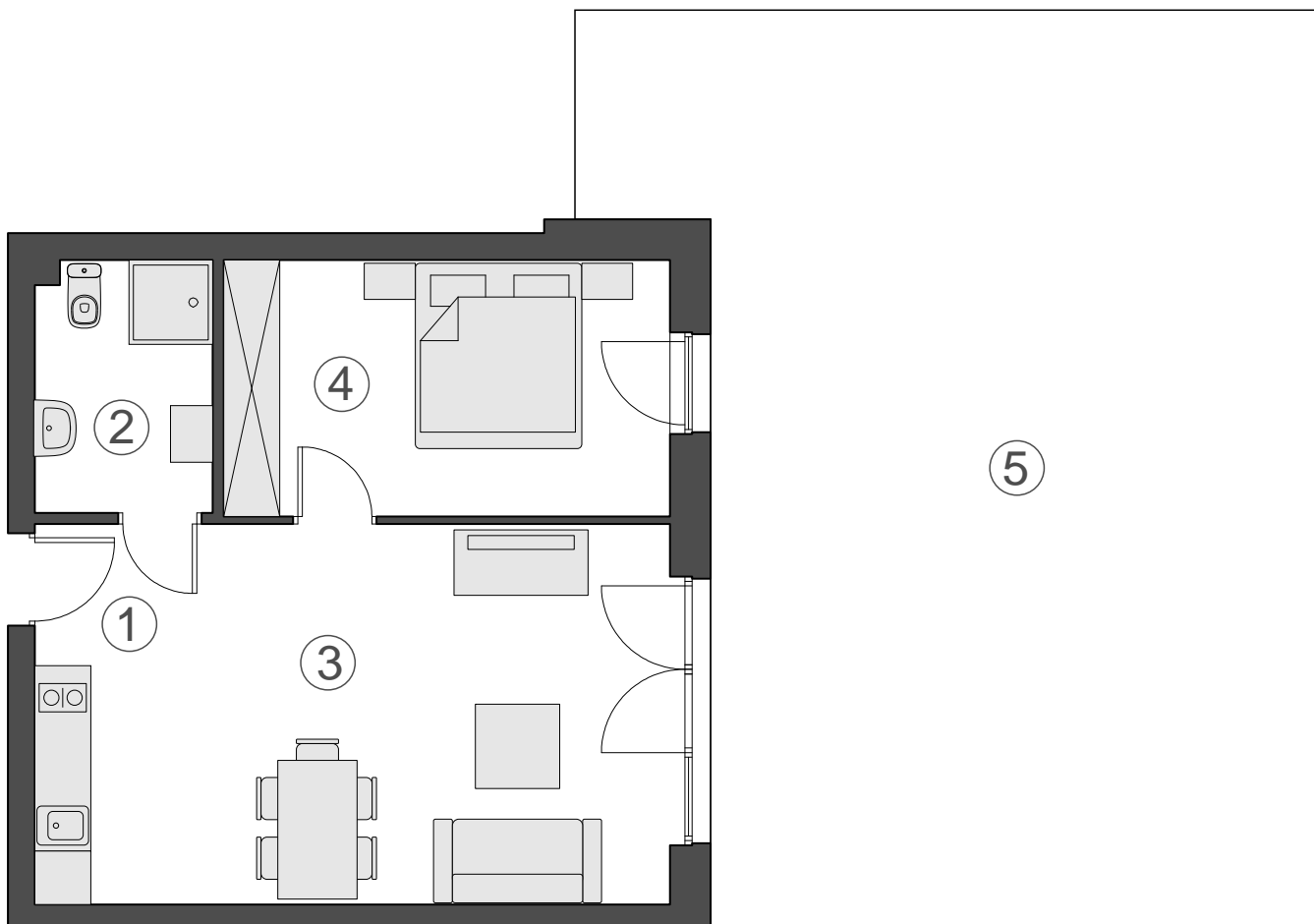
PARTER

LOKAL: 5-0.6.

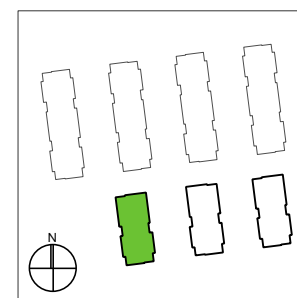


Baltic Park 2

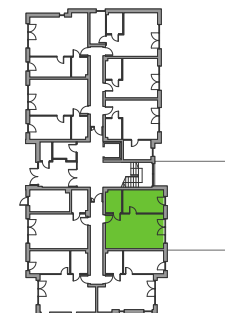
POGORZELICA



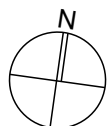
UL. WOJSKA POLSKIEGO



UL. SŁONECZNA



1. PRZEDSIONEK	3,00 m ²
2. ŁAZIENKA	5,03 m ²
3. SALON Z ANEKSEM KUCHENNYM	24,71 m ²
4. POKÓJ	13,12 m ²
POW. U YTKOWA	45,86 m²
5. PRZEDOGRÓDEK	98,0 m ²



0 1 2 5 10m